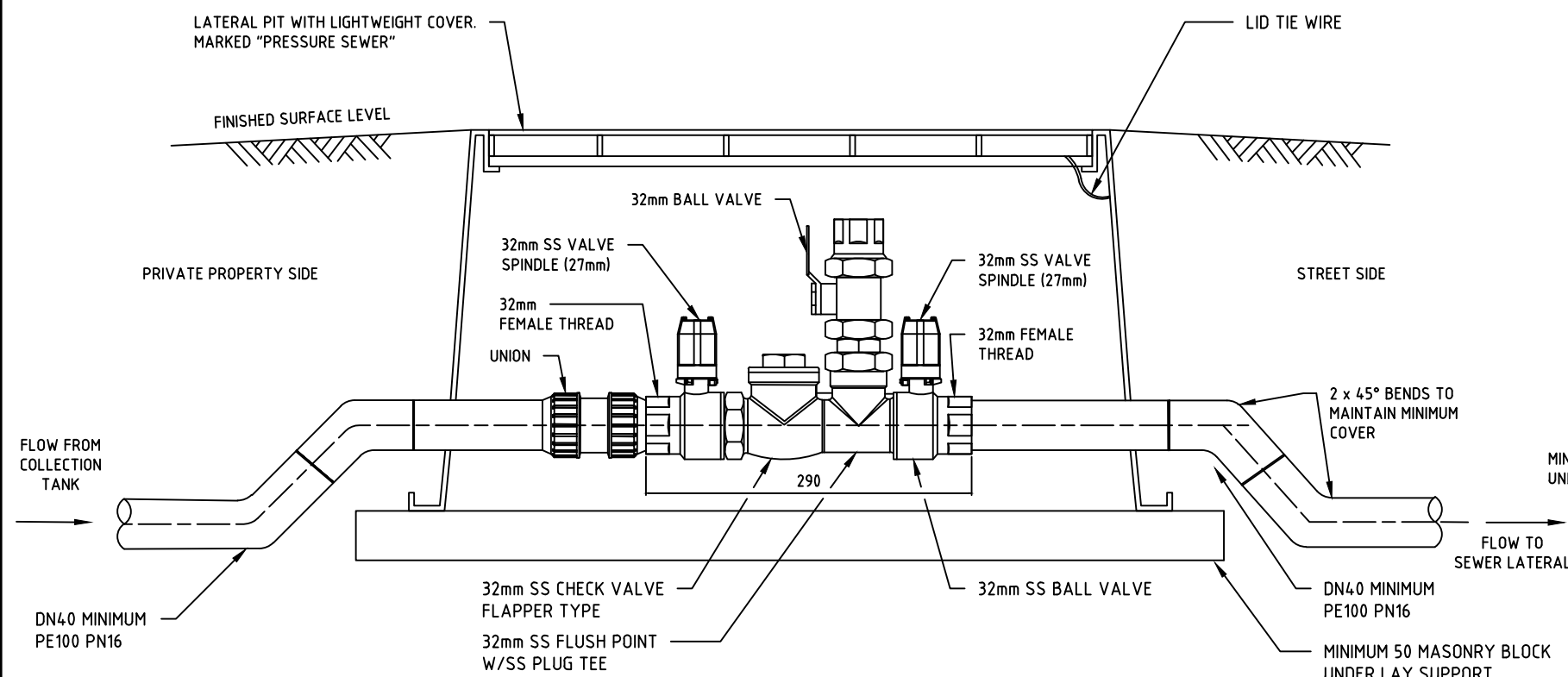


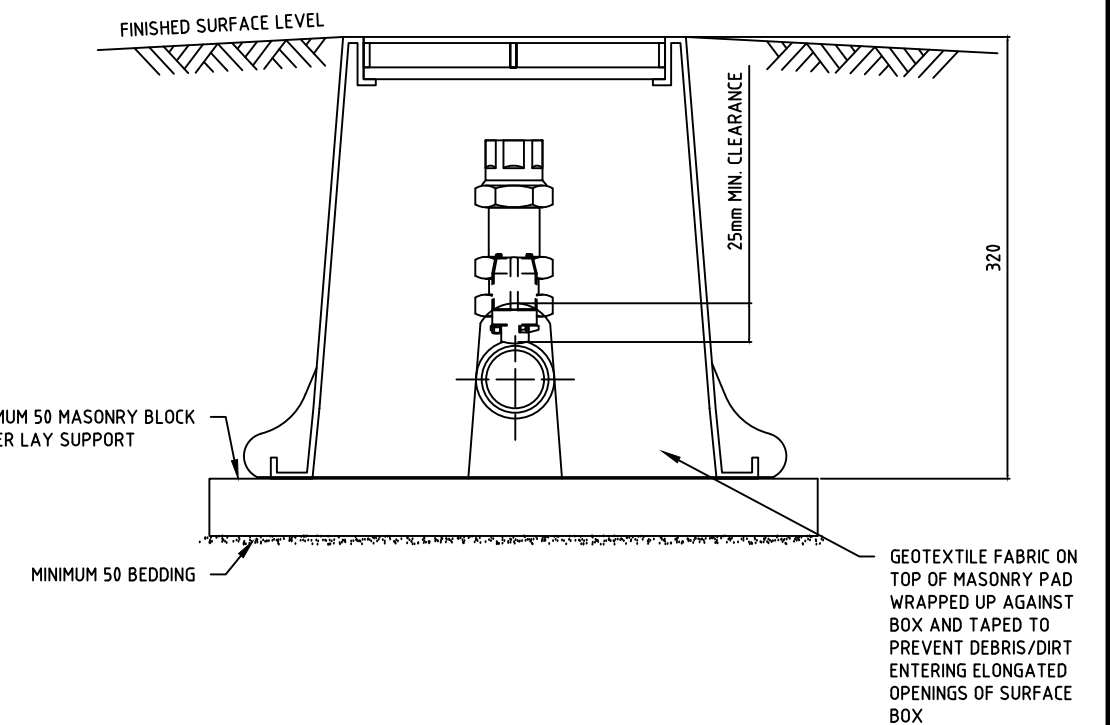
PLAN

NOTES:

1. ALL DIMENSIONS IN MILLIMETRES UNLESS OTHERWISE NOTED.
2. USE ONLY APPROVED COMPONENTS.
3. ENSURE THAT LID OF SURFACE BOX IS MARKED AS SHOWN. WHERE THE WARNING/NAMEPLATE IS NOT CAST OR MOULDED INTO THE LID. AFFIX ENGRAVED SS NAMEPLATE USING SS FASTENERS.
4. PREPARE BEDDING UNDER SURFACE BOX TO SPECIFICATION.
5. INSTALL SURFACE BOX SLIGHTLY PROUD OF SURFACE SO THAT FSL CAN BE GRADED AWAY FROM LID.
6. TEST ASSEMBLY AND CONNECTING PRESSURE SEWERS HYDROSTATICALLY AFTER INSTALLATION IN ACCORDANCE WITH CODE
7. INSTALLATION OF UNIONS REQUIRED TO ALLOW ASSEMBLY AND DISASSEMBLY OF BOUNDARY KIT COMPONENTS.
8. ALL VALVES, PIPE FITTINGS AND PIPE SHALL BE CONSTRUCTED OF 316 STAINLESS STEEL.
9. 4.0mm DIAMETER HWC APPROVED KIT FOR SINGLE RESIDENTIAL DWELLING ALL OTHER DEVELOPMENT SIZING TO BE APPROVED BY HUNTER WATER.
10. COAT ALL STAINLESS STEEL THREADED SECTIONS WITH LOCKTITE 771 OR APPROVED EQUIVALENT.



ELEVATION  
PROPERTY BOUNDARY KIT



END ELEVATION

WITH ACKNOWLEDGEMENT TO



PRESSURE SEWERAGE CODE OF AUSTRALIA

PROPERTY BOUNDARY KIT  
TYPICAL INSTALLATION

NOT TO SCALE

PSS-1102-V

ISSUED 2017

VERSION 2.0

© COPYRIGHT