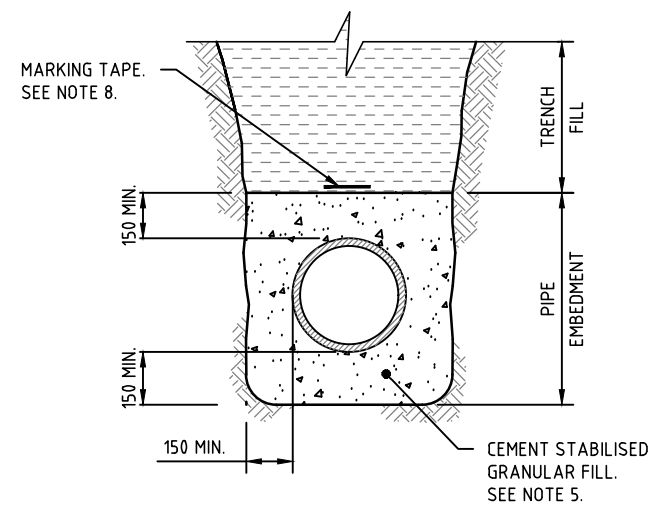
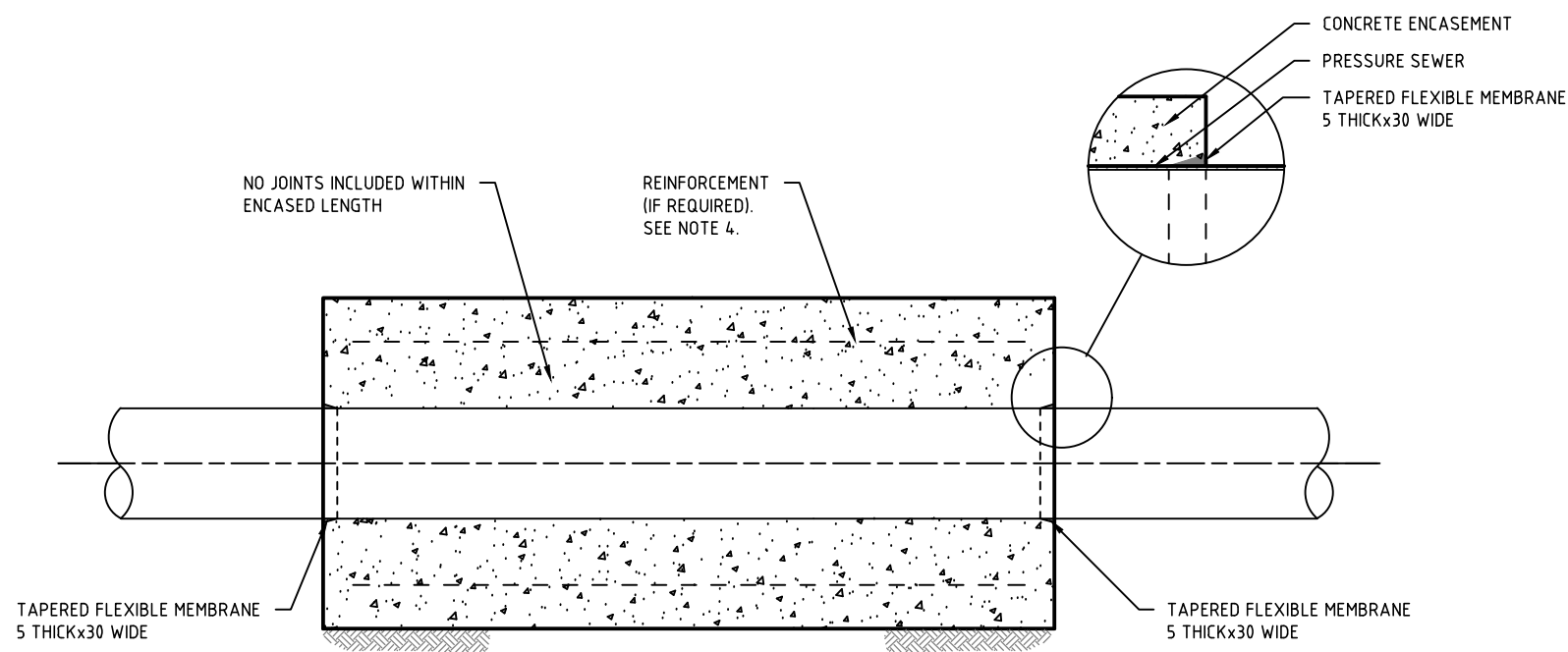


TYPICAL SECTION  
CONCRETE ENCASED



TYPICAL SECTION  
CEMENT STABILISED EMBEDMENT

EMBEDMENT TYPES TO BE SPECIFIED IN  
DESIGN DRAWINGS



CONCRETE ENCASEMENT SYSTEM

## NOTES:

1. ALL DIMENSIONS IN MILLIMETRES UNLESS OTHERWISE NOTED.
2. DESIGNER TO SPECIFY EMBEDMENT TYPE.
3. UNREINFORCED CONCRETE TO BE CLASS N20 AND REINFORCED CONCRETE TO BE N25. FOR AGGRESSIVE CONDITIONS, USE SPECIAL CLASS CONCRETE.
4. CENTRALLY PLACE STEEL REINFORCEMENT OF 0.4% OF CONCRETE CROSS SECTION AND WITH MINIMUM COVER OF 65 TO EXTERNAL FACE. SPECIFY REINFORCEMENT FOR APPLICABLE LOADING IN DESIGN DRAWINGS.
5. CEMENT STABILISED GRANULAR FILL TO HAVE MINIMUM 6% CEMENT (BY VOLUME). PLACE DRY.
6. PLACE CLSM DRY.
7. RESTRAIN PIPES DURING ENCASEMENT TO PREVENT MOVEMENT AND/OR FLOTATION.
8. LAY DETECTABLE MARKING TAPE TO SPECIFICATION.

ITEM LIST	
DESCRIPTION	PURCHASE SPECIFICATION
SAND COMPACTION (FOR PIPE EMBEDMENT)	WSA PS-350
PROCESSED AGGREGATES FOR PIPE EMBEDMENT	WSA PS-351
CONTROLLED LOW STRENGTH MATERIALS (CLSM) FOR PIPE EMBEDMENT	WSA PS-352
ROCK, FINE CRUSHED FOR ROADBASE	WSA PS-353
ROCK, COURSE CRUSHED FOR ROADBASE	WSA PS-354
CONCRETE, PRE-MIXED, NORMAL CLASS	WSA PS-357
CONCRETE, PRE-MIXED, NORMAL CLASS	WSA PS-358
TRENCHFILL MATERIALS	WSA PS-363
GRADED RECYCLED MATERIALS FOR PIPE EMBEDMENT	WSA PS-364
RECYCLED MATERIALS FOR TRENCH FILL	WSA PS-365
MARKING TAPE, DETECTABLE	WSA PS-318

WITH ACKNOWLEDGEMENT TO



PRESSURE SEWERAGE CODE OF AUSTRALIA

SPECIAL EMBEDMENTS  
CONCRETE AND CEMENT STABILISED  
SYSTEMS

NOT TO SCALE

PSS-1001-V

ISSUED 2017

VERSION 2.0

© COPYRIGHT