

HUNTER WATER

SECTION s170 REGISTER



ITEM NAME:

Cardiff South 1 Water Pump Station

Contents:



Item details



Historical Overview



Heritage Status



Heritage Significance



Description



Management



Key Images



References

ITEM DETAILS



Item Name	Cardiff South 1 Water Pump Station
Other / Former Names	Cardiff South Water Pump Station
NSW SHI No.	3630042
GID	419510
Plant No.	WS-CAS-001-PS1
Local Government Area	Lake Macquarie
Lot and DP	Lot 1 DP 217429
Address	31 Knight Street, Cardiff South NSW 2285
Curtilage	The curtilage of this asset is defined by its physical extent, rather than the relevant Lot and DP.



External view of the Pump Station



Asset location and curtilage (red boundary) (refer to [Figure 1](#) for additional detail)

HISTORICAL OVERVIEW



Current Use	Water pumping station
Former Use	N/A
Designer / Builder	Hunter District Water Board
Historical Notes	<p>The site of the Cardiff South 1 Water Pump Station was procured by NSW Public Works on 30 May 1928, and appears on Parish Maps in this period to have been purchased for establishing a reservoir. It is unclear what progress was made for establishing the reservoir prior to 1953 where historical aerial imagery shows a large round tank with no roof been constructed on site. The Cardiff South 1 Water Pump Station is also visible under construction in the 1953 aerial imagery and it was completed the following year in 1954. The land was gazetted to the Hunter Water Board in April of 1962 and by 1965 a second, smaller tank was constructed to the south of the Cardiff South 1 Water Pump Station building and a roof added to the larger tank on the site.</p> <p>The smaller building, located adjacent to the southwest corner of Cardiff South 1 Water Pump Station building was constructed between 1997 and 2000.</p>

HERITAGE STATUS



Listing Details	<p>S170 Heritage and Conservation Register</p> <p>Local heritage listing</p> <p>State heritage listing</p>
Conservation Management Plan	N/A
Heritage Asset Action Plan	N/A
Aboriginal Sites Registered within the Site	AHIMS search undertaken on 4 November 2022. No sites were registered in or within 50 metres of the relevant Lot and DP.
Historical Archaeological Potential	Not assessed.

HERITAGE SIGNIFICANCE



Level of Significance	Local
Statement of Significance	<p>Cardiff South 1 Water Pump Station is a late but well-designed water pumping station associated with adjacent steel tank reservoirs. The building continues the traditional style of Hunter Water pumping stations used in the 1930s and 1940s despite being constructed later and makes a positive aesthetic contribution to the surrounding area.</p> <p>The reservoirs located in the vicinity have not previously been identified as significant.</p>
NSW SHR Criteria	<ul style="list-style-type: none">a) Historicalb) Associativec) Aesthetic / Technicald) Sociale) Research Potential (yield new information)f) Rareg) Representative
Significant Elements	<ul style="list-style-type: none">• Stylistically similar to Bellbird Heights 1 Water Pump Station and Teralba 1 Water Pump Station.• Overall form, shape, and scale.• Brickwork externally, including all rendered elements such as the sills and lintels.• The shallow portico entrance.• Original timber joinery to windows.• Rhythm and presentation of fenestration (window and door openings).

DESCRIPTION



Setting	Located in a residential setting and partially surrounded by bushland. Two reservoirs are sited either side of the Pump Station, and a modern building in a sympathetic architectural style is placed adjacent.
External Appearance	<p>Rectangular brick building constructed in 1954. Features red brickwork laid predominantly in stretcher bond with a soldier upper course beneath the asbestos sheet soffit. The plinth and head have been rendered in pale, green-painted concrete, leaving an exposed central strip of brickwork. Spalling render at the base of the building reveals a damp-proof course constructed from cream brick. The roof is a louvred hipped roof, with cream-painted timber louvres present in the openings and the main roof body covered in dark red ceramic Marseille tiles.</p> <p>The main entrance faces away from the street. A shallow portico frames the door. The vertical columns have been left as exposed brick, whilst the door lintel has been rendered in concrete. The entrance was likely originally a hinged flush timber door; however, it has been replaced with double steel doors. This has been painted in dark green. The northern façade has an additional access door, which may not be original.</p> <p>Two windows frame the entrance door and each long wall were initially set with two windows. Both windows on the western façade have been infilled with brick. The northern façade has a single window. All windows are single-hung sash with white-painted timber frames and two panes of glazing to each panel. The windows adjacent to the entrance door are covered by timber framed and ledged shutters. The outside surfaces of the shutters have been painted pale green whilst the internal surfaces are cream. The frame and glazing of the front right window have been removed. The other windows have been covered in in metal mesh for security. The lintels are concealed beneath painted concrete render, as are the sills which are sloped. Covered wall vents are present beneath each window. Internally, these have variously been covered by steel louvres for security.</p>
Internal Appearance	The building comprises a single room split into two shallow levels. The floor is a sealed concrete slab. The internal brickwork face has been painted cream but recently re-pointed. The lower level holds pump machinery, whilst the associated electrical infrastructure lines the upper level. The ceiling consists of cream-painted panels. Three overhead cranes are present in the space.
Overall Condition	Fair
Moveable Heritage Objects	<ul style="list-style-type: none"> Mid-century 'Electric Shock Rescue and Resuscitation' sign.

MANAGEMENT



Approval and Assessment Requirements	<p><u>Minor or inconsequential impacts:</u> Anything other than routine repair and maintenance must be discussed with the Environment Team to determine the level of heritage assessment required.</p> <p><u>More than minor or inconsequential impacts:</u> As above. Additionally, consultation with the relevant local council is required.</p> <p>Demolition or removal from the register requires consultation with Heritage NSW and archival recording.</p>
General / Ongoing Management	<ul style="list-style-type: none"> Changes within the defined curtilage should be preceded by the appropriate level of heritage assessment and approval. Advice and/or confirmation should be sought from the Environment Team prior to undertaking any works. Maintain overall form, shape and scale of the building. The introduction of new buildings or structures within the curtilage is discouraged. If introduced, the ability to view the building 'in the round' is to be retained and not obscured. Maintain existing shallow portico, original window detailing, fenestration, and significant elements. Changes to fabric may be supportable if no feasible alternative is available/to ensure ongoing operation and/or safety. Removal or replacement of non-significant elements (such as lighting, rainwater goods, services, external signage, etc) is supportable, provided that any replacement is appropriate to the building. Reinstatement of sympathetic window glazing and hardware may be suitable.
Priority Conservation Works	<ul style="list-style-type: none"> Assess and repair damage to external brickwork and concrete render, including mortar loss, spalling, and cracking. Assess and repair damage to internal concrete slab floor, including sealing, salt accumulation, and spalling. Remove graffiti from external walls. Repair damage to ceiling panels.



Image 1: Main entrance



Image 2: Eastern façade and additional entrance



Image 3: Internal space, showing absent glazing in left window



Image 4: 'Electric Shock Rescue and Resuscitation' sign



Image 5: Internal space, showing pump machinery and control panels

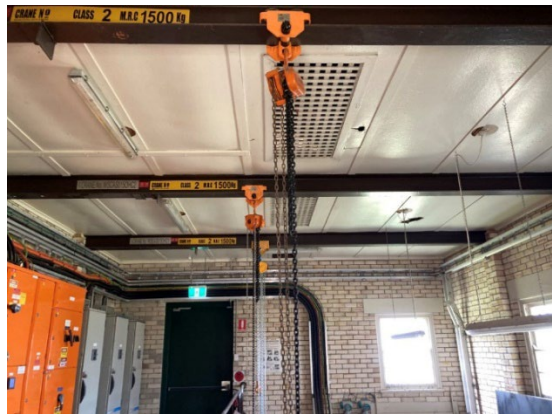


Image 6: Overhead cranes



Image 7: Modern building behind water pumping station



Image 8: Adjacent reservoir (non-significant)



- Clem Lloyd, Patrick Troy and Shelley Schreiner 1992, For the Public Health. The Hunter District Water Board 1892-1992. Publisher: Longman Cheshire Pty Ltd, Melbourne.
- Department of Public Works, Annual Reports, 1888 to 1892 and 1893-94 to 1960-61.
- Futurepast Heritage Consulting Pty Ltd, 2010, 'Hunter Water Conservation and Heritage Register Study'.
- Glennie Jones 1967, The Movement for Newcastle's First Water Supply 1875-1885, Newcastle History Monographs No. 2. Publisher: The Council of the City of Newcastle, Newcastle.
- Hunter District Water Board, Annual Reports, 1938-39 to 1987-88.
- Hunter District Water Supply and Sewerage Board, Annual Reports, 1897-98 to 1937-38.
- Hunter Water Board, Annual Reports, 1988-89 to 1990-91.
- Hunter Water Corporation, Annual Reports, 1991-92 to 2008-09.
- John W Armstrong 1967, Pipelines and People. The History of the Hunter District Water Board Newcastle, New South Wales. Publisher: The Hunter District Water Board, Newcastle.
- Mal Hindley 1983, 'From Weirs, Dams and Sand', in Shaping the Hunter. Publisher: The Newcastle Division of the Institute of Engineers Australia, Newcastle.
- 1962 'HUNTER DISTRICT WATER, SEWERAGE AND DRAINAGE ACT, 1938, AS AMENDED', Government Gazette of the State of New South Wales (Sydney, NSW: 1901 - 2001), 6 April, p. 956. , viewed 14 Jun 2023, <http://nla.gov.au/nla.news-article220248779>.



In partnership with



Environmental &
Social Consultants

FIGURE 1

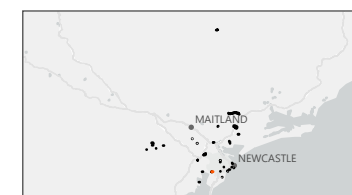
S170 Review - Heritage Curtilages

Legend

- Road
- +— Railway
- Lot Boundary
- ▭ Heritage Curtilages



Cardiff South 1 Water Pump Station



0 100
Metres

Scale 1:2,500 at A4
GDA 1994 MGA Zone 56

This document and the information are subject to Terms and Conditions and Umwelt (Australia) Pty Ltd ("Umwelt") Copyright in the drawings, information and data recorded ("the information") is the property of Umwelt. This document and the information are solely for the use of the authorized recipient and this document may not be used, copied or reproduced in whole or part for any purpose other than that which it was supplied by Umwelt. Umwelt makes no representation, undertakes no duty and accepts no responsibility to any third party who may use or rely upon this document or the information.
APPROVED FOR AND ON BEHALF OF Umwelt