

HUNTER WATER

SECTION s170 REGISTER



ITEM NAME:

Newcastle West 2 Wastewater Pumping Station

Contents:



Item details



Historical Overview



Heritage Status



Heritage Significance



Description



Management



Key Images



References

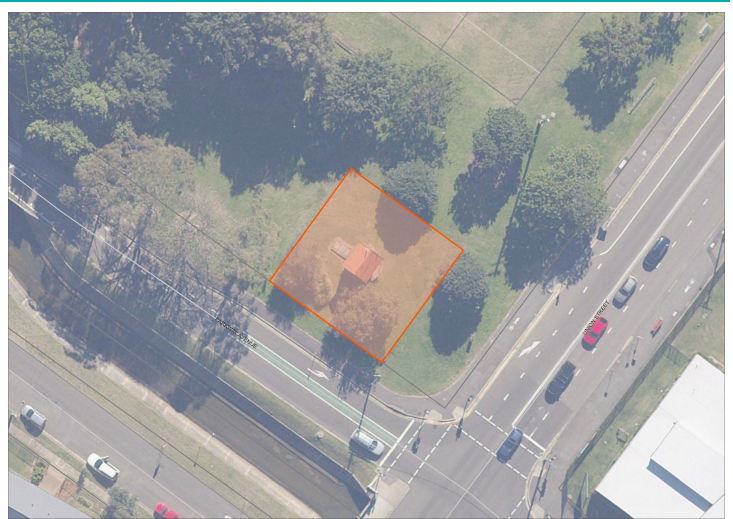
ITEM DETAILS



Item Name	Newcastle West 2 Wastewater Pumping Station
Other / Former Names	Newcastle 3 Wastewater Pumping Station Newcastle No. 3 (National Park) Sewage Pumping Station
NSW SHI No.	3630058
GID	254310
Plant No.	SS-NCW-002-PS1
Local Government Area	Newcastle
Lot and DP	Lot 1 DP 713238
Address	118 Parkway Avenue, Newcastle West NSW 2302
Curtilage	The curtilage of this asset is defined by its legal allotment boundaries (defined by the relevant Lot and DP).



View of the Pump Station from Parkway Avenue



Asset location and curtilage (red boundary) (refer to Figure 1 for additional detail)

HISTORICAL OVERVIEW



Current Use	Wastewater pumping station
Former Use	N/A
Designer / Builder	Public Works Department
Historical Notes	<p>The Public Works Department constructed the Newcastle sewerage scheme in accordance with Joseph Davis' drawings. Gravitation disposed of sewage from high areas of the city and pumping cleared sewage from low areas.</p> <p>The Newcastle West 2 Wastewater Pumping Station was referred to as the Newcastle No. 3 (National Park) Sewage Pumping Station when constructed.</p>

HERITAGE STATUS



Listing Details	<input checked="" type="checkbox"/> S170 Heritage and Conservation Register <input type="checkbox"/> Local heritage listing <input type="checkbox"/> State heritage listing
Conservation Management Plan	<input type="checkbox"/> N/A
Heritage Asset Action Plan	<input type="checkbox"/> N/A
Aboriginal Sites Registered within the Site	No sites were registered in or within 50 metres of the relevant Lot and DP as at 19 September 2022.
Historical Archaeological Potential	Not assessed.

HERITAGE SIGNIFICANCE



Level of Significance	Local
Statement of Significance	<p>Newcastle West 2 Wastewater Pumping Station is a good example of a well-detailed local wastewater pumping station. Constructed in timber, the building has a "cottage-like" appearance and the use of timber in municipal infrastructure is increasingly rare.</p> <p>The structure is well situated within a local park and has a high degree of integrity despite its age, including retained internal detailing.</p>
NSW SHR Criteria	<input type="checkbox"/> a) Historical <input type="checkbox"/> b) Associative <input checked="" type="checkbox"/> c) Aesthetic / Technical <input type="checkbox"/> d) Social <input type="checkbox"/> e) Research Potential (yield new information) <input checked="" type="checkbox"/> f) Rare <input checked="" type="checkbox"/> g) Representative
Significant Elements	<ul style="list-style-type: none">Overall scale, form and design of the Station.External materiality including façade treatment, roof form and tiles, and windows (including sill and joinery).Internal features such as panelled wall sheeting, cornices and skirtings, vents and the battened ceiling.

DESCRIPTION



Setting	The Pump Station is situated within open, grassed parkland (National Park) adjacent to Parkway Avenue.
External Appearance	A timber framed, painted weather board building installed over a raised concrete drywell. The roof is gabled and Marseille tiled, with non-original gutters and downpipes. There is original double hung sash windows to the east and west sides of the building, which are covered by an intrusive wire mesh. The door is timber sheeted, with a fibrous cement board at the base. The paintwork is inconsistent, likely due to sporadic painting events associated with graffiti.
Internal Appearance	Internally the building is largely original, with concrete floors, half-height timber panelled walls and decorative skirtings and cornices. Original vents remain, and the simple batten ceiling is also original. Equipment within the building appears largely new.
Overall Condition	Good.
Moveable Heritage Objects	None identified.

MANAGEMENT



Approval and Assessment Requirements	<p><u>Minor or inconsequential impacts:</u> Anything other than routine repair and maintenance must be discussed with the Environment Team to determine the level of heritage assessment required.</p> <p><u>More than minor or inconsequential impacts:</u> As above. Additionally, consultation with the relevant local council is required.</p> <p>Demolition or removal from the register requires consultation with Heritage NSW and archival recording.</p>
General / Ongoing Management	<ul style="list-style-type: none"> Changes within the defined curtilage should be preceded by the appropriate level of heritage assessment and approval. Advice and/or confirmation should be sought from the Environment Team prior to undertaking any works. Maintain overall form, shape and scale of the building. Changes to fabric may be supportable if no feasible alternative is available to ensure ongoing operation and/or safety. Replacement/removal of redundant or failing elements or equipment is acceptable. Removal or replacement of non-significant elements (such as rainwater goods, window coverings, recent pit covers and safety railings, etc) is supportable. Any replacements must be appropriate/sympathetic.
Priority Conservation Works	<ul style="list-style-type: none"> Assess timber rot and repair and/or rectify drainage as necessary. Replace missing glazing. Re-paint painted surfaces for consistency of appearance and to protect timber elements (both internal and external). Assess concrete condition and rectify drainage and repair as necessary.



Image 1: View of the Pump Station facing southeast



Image 2: View of the front (northern) elevation of the Pump Station



Image 3: View of the Pump Station facing southwest



Image 4: View of an original window with later wire mesh added and graffiti to wall



Image 5: Internal view within Pump Station showing original features and new equipment



Image 6: Internal view showing concrete flooring, skirtings, wall lining and condition issues

REFERENCES



- Clem Lloyd, Patrick Troy and Shelley Schreiner 1992, For the Public Health. The Hunter District Water Board 1892-1992. Publisher: Longman Cheshire Pty Ltd, Melbourne.
- Department of Public Works, Annual Reports, 1888 to 1892 and 1893-94 to 1960-61.
- Futurepast Heritage Consulting Pty Ltd 2010, 'Hunter Water Conservation and Heritage Register Study'.
- Glennie Jones 1967, The Movement for Newcastle's First Water Supply 1875-1885, Newcastle History Monographs No. 2. Publisher: The Council of the City of Newcastle, Newcastle.
- Hunter District Water Board, Annual Reports, 1938-39 to 1987-88.
- Hunter District Water Supply and Sewerage Board, Annual Reports, 1897-98 to 1937-38.
- Hunter Water Board, Annual Reports, 1988-89 to 1990-91.
- Hunter Water Corporation, Annual Reports, 1991-92 to 2008-09.
- John W Armstrong 1967, Pipelines and People. The History of the Hunter District Water Board Newcastle, New South Wales. Publisher: The Hunter District Water Board, Newcastle.
- Mal Hindley 1983, 'From Weirs, Dams and Sand', in Shaping the Hunter. Publisher: The Newcastle Division of the Institute of Engineers Australia, Newcastle.



In partnership with



Environmental &
Social Consultants



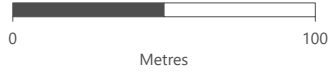
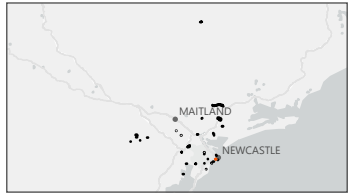
FIGURE 1

S170 Review - Heritage Curtilages

Legend

- Road
- Railway
- Lot Boundary
- Heritage Curtilages

Newcastle West 2 Wastewater Pumping Station



Scale 1:2,500 at A4
GDA 1994 MGA Zone 56

This document and the information are subject to Terms and Conditions and Umwelt (Australia) Pty Ltd ("Umwelt") Copyright in the drawings, information and data recorded ("the information") is the property of Umwelt. This document and the information are solely for the use of the authorized recipient and this document may not be used, copied or reproduced in whole or part for any purpose other than that which it was supplied by Umwelt. Umwelt makes no representation, undertakes no duty and accepts no responsibility to any third party who may use or rely upon this document or the information.
APPROVED FOR AND ON BEHALF OF Umwelt