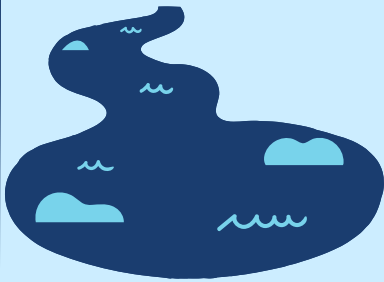




# Skittles and our waterways

## Keep our waterways healthy!

Our catchments and waterways can become pretty dirty very quickly. Today we are going to do a Skittles experiment and use it to show you just how quickly things we have in our environment can pollute and affect the health of our catchments and waterways.



### What you need:

- Skittles
- Water
- Clear container
- Blu-tack



### Method:

1. Line the skittles up along the bottom of a container using the blu-tack to hold them in place in two parallel lines with a 5-10cm gap. Order of the colour does not matter. Each colour represents a contamination to the water:

**Green skittle** - Green waste such as leaf litter and grass clippings

**Purple skittle** - dog droppings, stock droppings or fertiliser that can flow into the catchment

**Orange skittle** - Litter which may flow into our waterways if not disposed of properly

**Red skittle** - road run off that may occur due to cars dripping oils and fuels

**Yellow Skittle** - chemicals or pesticides that may wash off plants and gardens if they have been sprayed just before rain

2. Pour clean water into container

3. Observe contaminates mixing and flowing into the clean catchment

### What did we learn?

We can see the water has turned from a healthy catchment to a brown, murky unhealthy catchment. This would eventually run through the stormwater drains or creeks into our harbour, lake or ocean and cause serious damage to the wider environment and marine life.

So what can you do to protect our waterways?

- Correctly dispose of green waste and litter
- Retain landscaping to reduce soil erosion
- Dispose of detergents, chemicals and oils correctly
- Wash your car away from drains and gutters

These simple actions can make a big difference to the health of our catchments and waterways.



For more experiments or educational resources visit:  
[hunterwater.com.au/schools](http://hunterwater.com.au/schools)