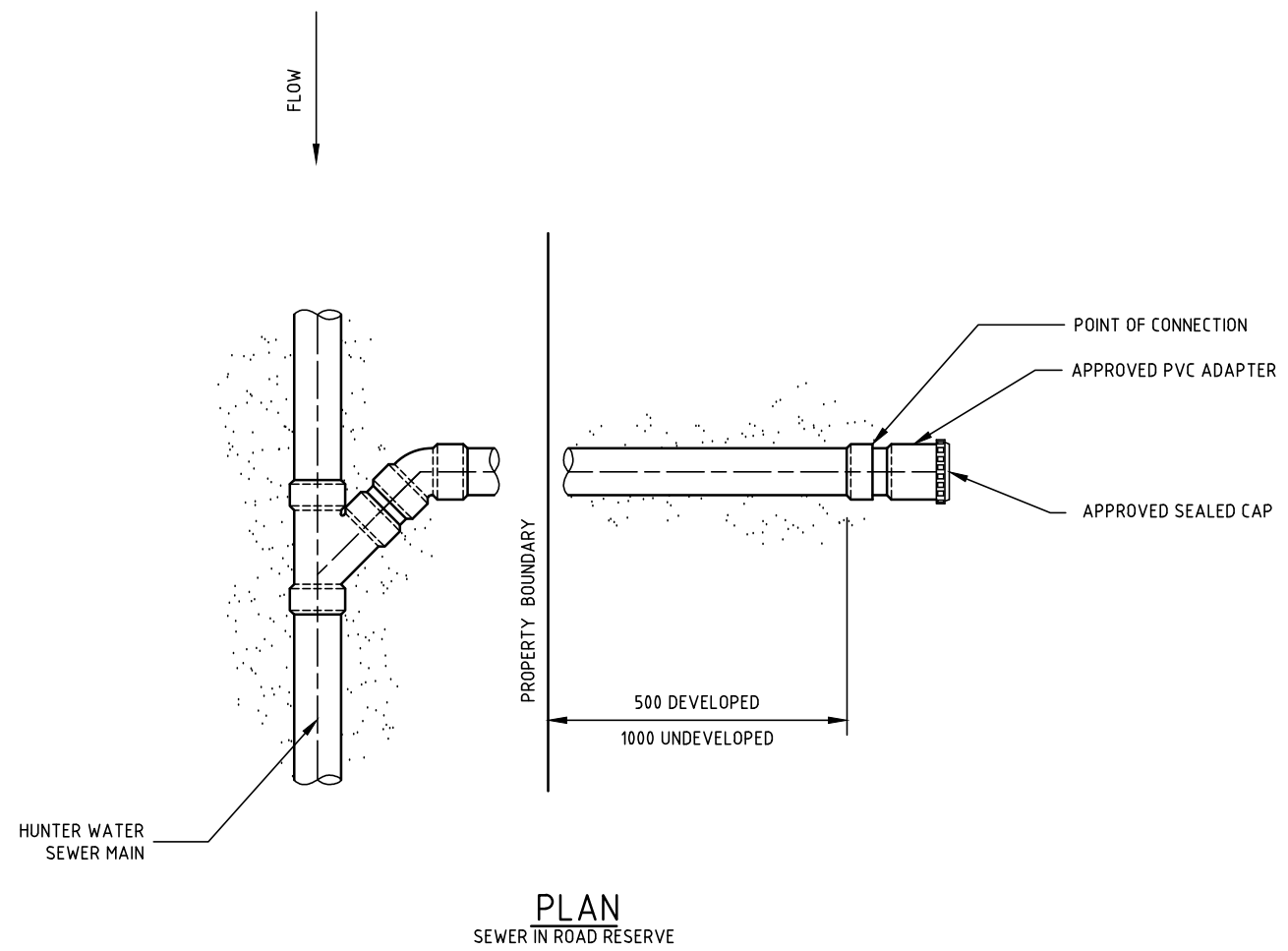
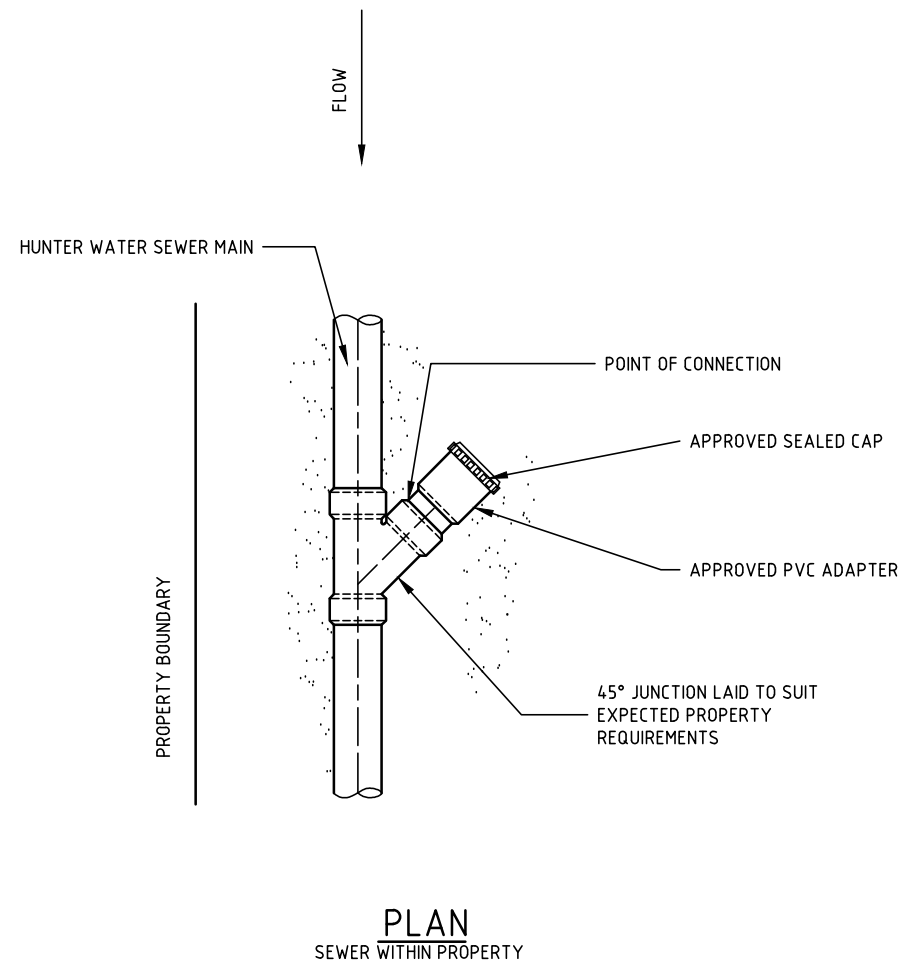


NOTES

1. ALL PRIVATE SANITARY DRAINAGE SHALL BE REMOVED FROM HUNTER WATER'S INFRASTRUCTURE INCLUDING SEWER INSPECTION SHAFTS, BOUNDARY TRAPS AND DOWNSTREAM INSPECTION OPENINGS.
2. ADAPT A PVC CONNECTOR SOCKET TO THE VC PIPE, EARTHENWARE PIPE OR PVC PIPE AND CAP WITH A SCREW ON CAP.
3. PROVIDE INDICATIVE PLASTIC TAPE FROM THE CAPPED PIPE TO GROUND LEVEL TO IDENTIFY LOCATION.



2	REVISION	G.H.	01.09.2015
1	REVISION by GREG HEANEY	G.H.	12.12.2013
0	CONSTRUCTION ISSUE	G.H.	04.07.2012
REV No.	REVISION	APPROVED	DATE
© COPYRIGHT HUNTER WATER CORPORATION LIMITED.		APPROVED MANAGER ASSET MANAGEMENT HUNTER WATER CORPORATION (H.W.C.)	



STANDARD CONSTRUCTION PRACTICE
SEWERAGE STANDARD

SERVICE CONNECTION STANDARD
 SEWER DISCONNECTION DETAIL

CAD FILE NAME: TSS-004 SEWER DISCONNECTION

HWCS

TSS-004

ISSUED: OCTOBER 2015

A3