

Hunter Water S170 Register

SHI No.: *Name:*
3630117 Cipoletti Weir

Location Corlette Drive, Bandon Grove NSW 2420



Description:

The Cipoletti Weir consists of a small mass concrete weir (and associated walkways) approximately 500m downstream from the dam wall on the Chichester River, and is used for flow measurement.

There is a timber framed, galvanised steel sheeted monitoring station at the weir used to measure water flow via a steel angle adjacent to the weir, which provides datum.

Significance:

Cipoletti Weir is an important element of the Chichester Dam precinct as it demonstrates the former manual method of measuring river flow below the dam. While now superseded by electronic equipment, the manual measuring equipment remains on site and can still be used if required.

Assessed Significance: Local

Endorsed Significance: Local

Historical Notes:

Constructed: c. 1927-1928

A concrete gauging weir was constructed for measuring the flow of the Chichester River below the dam, and completed in 1927-28. By the close of the year inquiries were being made as to a suitable automatic flow recorder. This recorder was installed in 1929-30, and was found to be of considerable use in determining the amount of water allowed to pass down the river during drought periods, and also for gauging the quantity of water flowing over the dam during periods of flood.

Designer/Builder: Public Works Department

Current Use: Weir

Former Uses:

Physical Condition:

Recommended Management:

- This item contributes to local character and should be conserved.
- Original details should be maintained including doors, windows and original signage.
- New materials should be sympathetic to the nature and character of the original building.
- In the event of major proposed changes, prepare a Conservation Management Strategy and undertake an archival recording.
- Wherever possible, changes should be restricted to the interior of the building.
- Routine maintenance of existing fabric is essential.

References:

Clem Lloyd, Patrick Troy and Shelley Schreiner 1992, For the Public Health. The Hunter District Water Board 1892-1992. Publisher: Longman Cheshire Pty Ltd, Melbourne.

Department of Public Works , Annual Reports, 1888 to 1892 and 1893-94 to 1960-61.

Glennie Jones 1967, The Movement for Newcastle's First Water Supply 1875-1885, Newcastle History Monographs No. 2. Publisher: The Council of the City of Newcastle, Newcastle.

Hunter District Water Board , Annual Reports, 1938-39 to 1987-88.

Hunter District Water Supply and Sewerage Board , Annual Reports, 1897-98 to 1937-38.

Hunter Water Board , Annual Reports, 1988-89 to 1990-91.

Hunter Water Corporation , Annual Reports, 1991-92 to 2008-09.

John W Armstrong 1967, Pipelines and People. The History of the Hunter District Water Board Newcastle, New South Wales. Publisher: The Hunter District Water Board, Newcastle.

Mal Hindley 1983, 'From Weirs, Dams and Sand', in Shaping the Hunter. Publisher: The Newcastle Division of the Institute of Engineers Australia, Newcastle.

Hunter Water S170 Register

Listings:

1 *Heritage Act - s.170 NSW State agency heritage register:*
Listing date: . Reference Number:

Data Entry: *Date First Entered:* 23/Jul/2010 *Date Updated:* 10/Sep/2010 *Status:* Partial

Hunter Water S170 Register

Images



Cipoletti Weir

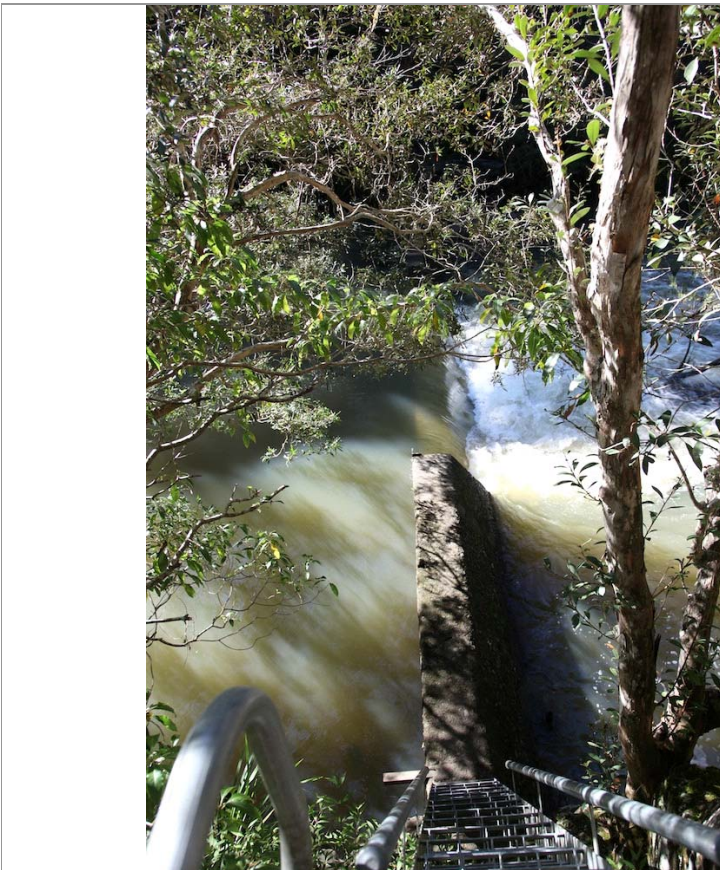
File: CipolettiWeir 1.jpg

Copyright:

Image by: Futurepast Heritage Consulting Pty Ltd

Date: 9/06/2010

Thumbnail: t_CipolettiWeir 1.jpg



Cipoletti Weir

File: CipolettiWeir 2.jpg

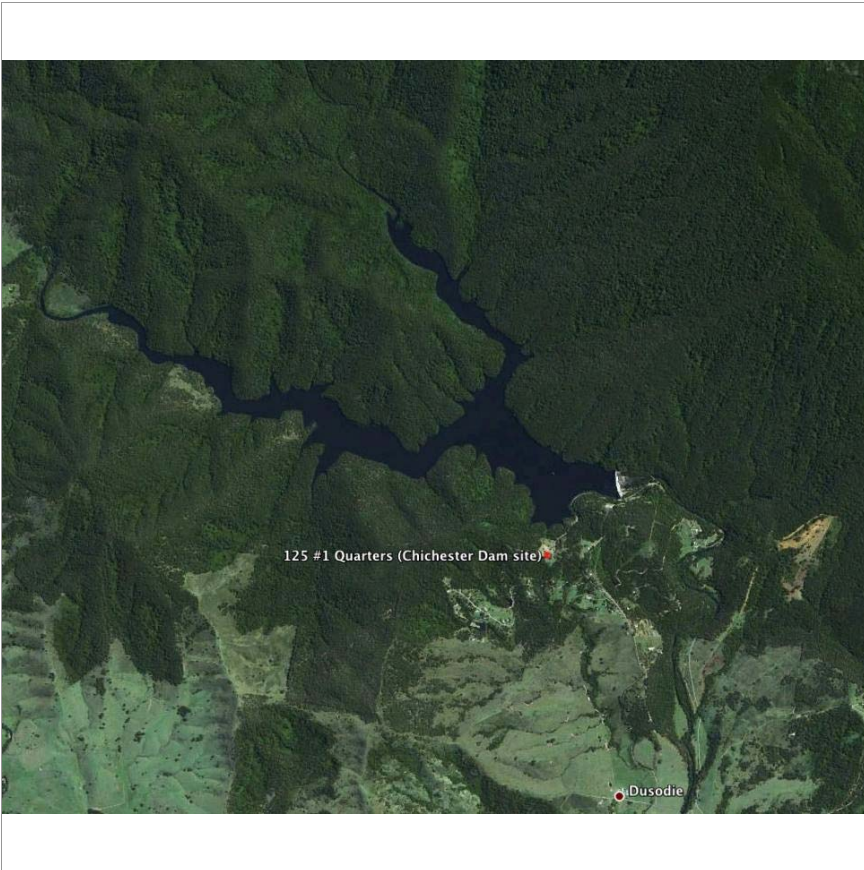
Copyright:

Image by: Futurepast Heritage Consulting Pty Ltd

Date:

Thumbnail: t_CipolettiWeir 2.jpg

Hunter Water S170 Register



Cipoletti Weir location (Courtesy of Google Earth)

File: chichester dam site
GE.jpg

Copyright:

Image by: Google Earth

Date:

Thumbnail: t_chichester dam
site GE.jpg