

Hunter Water S170 Register

SHI No.: *Name:*
3630136 Chichester Dam Office

Location Corlette Drive, Bandon Grove NSW 2420



Description:

An intact, 1920s, timber framed, painted weatherboard cottage on concrete pads/stools. The building has a four main room layout, with a fibro extension to the back verandah (to the north). It has a galvanised steel gabled roof with galvanised painted ogee gutters, a panelled exterior door and double hung sash windows.

Significance:

One of three houses remaining from the original construction of Chichester Dam. The house, now used as an office, demonstrates the character of the houses built on site for staff and the local living conditions. The building retains many original features.

Assessed Significance: Local

Endorsed Significance: Local

Historical Notes:

Constructed: c. -1925

Chichester Dam Office was erected at the time of the construction of the dam in the late 1920s. During the time of this extensive scheme of works, a sawmill was established near the dam site, which provided timber for the various constructions, hauled to the site on wooden tramlines. Similarly, a quarry was also established nearby, from which stone and gravel was sourced.

The office was erected on a hill above the dam site, where a terrace was excavated for the establishment of such things as a sandstone crusher, mixer sheds, engine rooms, general stores for material, fitters', blacksmiths' and carpenters' shops and the various accommodations as well as the general office.

A high lift duty water ram installed at the dam to supply water to the Board's cottages and grounds and do away with the more costly means of pumping water via the old engine and oil pump in 1929-30, and in the year 1932-33 the various buildings which remained on the site were painted.

Designer/Builder: Public Works Department

Current Use: Office

Former Uses:

Physical Condition:

Further Information:

Situated on a hill top, in an open setting.

Recommended Management:

- This item contributes to local character and should be conserved.
- Original details should be maintained including doors, windows and original signage.
- New materials should be sympathetic to the nature and character of the original building.
- In the event of major proposed changes, prepare a Conservation Management Strategy and undertake an archival recording.
- Wherever possible, changes should be restricted to the interior of the building.
- Routine maintenance of existing fabric is essential.

References:

Clem Lloyd, Patrick Troy and Shelley Schreiner 1992, For the Public Health. The Hunter District Water Board 1892-1992. Publisher: Longman Cheshire Pty Ltd, Melbourne.

Department of Public Works, Annual Reports, 1888 to 1892 and 1893-94 to 1960-61.

Glennie Jones 1967, The Movement for Newcastle's First Water Supply 1875-1885, Newcastle History Monographs No. 2. Publisher: The Council of the City of Newcastle, Newcastle.

Hunter Water S170 Register

Hunter District Water Board , Annual Reports, 1938-39 to 1987-88.

Hunter District Water Supply and Sewerage Board , Annual Reports, 1897-98 to 1937-38.

Hunter Water Board , Annual Reports, 1988-89 to 1990-91.

Hunter Water Corporation , Annual Reports, 1991-92 to 2008-09.

John W Armstrong 1967, Pipelines and People. The History of the Hunter District Water Board Newcastle, New South Wales. Publisher: The Hunter District Water Board, Newcastle.

Mal Hindley 1983, 'From Weirs, Dams and Sand', in Shaping the Hunter. Publisher: The Newcastle Division of the Institute of Engineers Australia, Newcastle.

Listings:

1 *Heritage Act - s.170 NSW State agency heritage register:*

Listing date: . Reference Number:

Data Entry: *Date First Entered:* 26/Jul/2010 *Date Updated:* 10/Sep/2010 *Status:* Partial

Hunter Water S170 Register

Images



Chichester Dam Office

File: Chichester Dam - Office.jpg

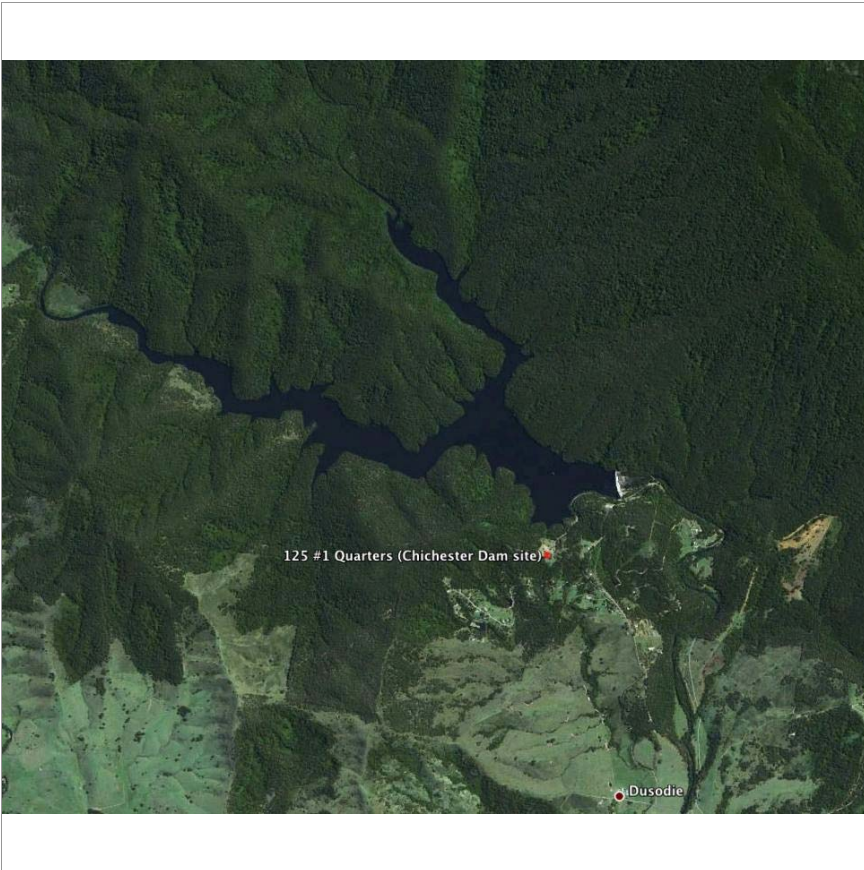
Copyright:

Image by: Futurepast Heritage Consulting Pty Ltd

Date: 9/06/2010

Thumbnail: t_Chichester Dam - Office.jpg

Hunter Water S170 Register



**Chichester Dam Office location
(Courtesy of Google Earth)**

File: chichester dam site
GE.jpg

Copyright:

Image by: Google Earth

Date:

Thumbnail: t_chichester dam
site GE.jpg