

Hunter Water S170 Register

SHI No.: *Name:*
3630005 Buttai No. 2 Reservoir

Location Lot 1 Buttai Rd, Four Mile Creek NSW 2323

Other ID nos IW ID: 5. Other ID: WRBUI2.



Description:

A later addition, Buttai Reservoir No. 2, forms an L shape around the Buttai No. 1 Reservoir and is made of concrete. The two structures are connected internally.

Significance:

Buttai Reservoir No. 2 is part of the 1920s expansion to the Walka system, following the commissioning of Chichester Dam. The Reservoir was built adjoining Reservoir No. 1 and represents an evolution in reservoir construction technique and a continuation of use of the Buttai Reservoir site.

Assessed Significance: Local

Endorsed Significance: Local

Historical Notes:

Constructed: c. 1929-1929

In 1929 Buttai Reservoir was extended to hold a further 3 500 000 gallons of water in order to obviate shortages of water supply to Cessnock. Completed and made available for the summer of 1928-29, the final capacity of the Buttai Reservoirs as a whole was 3 514 000 gallons.

In 1947-48 a scheme to amplify the water distribution was investigated, which included the augmentation of supply from Buttai Reservoir to Neath Pumping Station. In 1956 a 24-inch pipeline was laid for 2 ½ miles between Stoney Pinch and Buttai Reservoirs to improve supply. In 1960-61 a 20-inch cement-lined cast iron water main was completed between Buttai Reservoir and Heddon Greta, replacing an 18-inch wood stave main.

In the late 1990s, it was decided to roof the remaining open reservoirs under the control of the Hunter Water Corporation. By June 1999 construction on the roof of the Buttai Reservoirs had commenced.

Designer/Builder: Hunter District Water Supply and Sewerage Board

Current Use: Water storage

Former Uses:

Physical Condition:

Recommended Management:

- This item contributes to local character and should be conserved.
- Original details should be maintained including doors, windows and original signage.
- New materials should be sympathetic to the nature and character of the original building.
- In the event of major proposed changes, prepare a Conservation Management Strategy and undertake an archival recording.
- Wherever possible, changes should be restricted to the interior of the building.
- Routine maintenance of existing fabric is essential.

References:

Clem Lloyd, Patrick Troy and Shelley Schreiner 1992, For the Public Health. The Hunter District Water Board 1892-1992. Publisher: Longman Cheshire Pty Ltd, Melbourne.

Department of Public Works , Annual Reports, 1888 to 1892 and 1893-94 to 1960-61.

Glennie Jones 1967, The Movement for Newcastle's First Water Supply 1875-1885, Newcastle History Monographs No. 2. Publisher: The Council of the City of Newcastle, Newcastle.

Hunter District Water Board , Annual Reports, 1938-39 to 1987-88.

Hunter District Water Supply and Sewerage Board , Annual Reports, 1897-98 to 1937-38.

Hunter Water Board , Annual Reports, 1988-89 to 1990-91.

Hunter Water Corporation , Annual Reports, 1991-92 to 2008-09.

Hunter Water S170 Register

John W Armstrong 1967, Pipelines and People. The History of the Hunter District Water Board Newcastle, New South Wales. Publisher: The Hunter District Water Board, Newcastle.

Mal Hindley 1983, 'From Weirs, Dams and Sand', in Shaping the Hunter. Publisher: The Newcastle Division of the Institute of Engineers Australia, Newcastle.

Studies:

- 1 Futurepast Heritage Consulting Pty Ltd 2010, 'Hunter Water Conservation and Heritage Register Study'.
Reference: .
-

Listings:

- 1 *Heritage Act - s.170 NSW State agency heritage register:*
Listing date: . Reference Number:
-

Data Entry: *Date First Entered:* 26/Apr/2010 *Date Updated:* 10/Sep/2010 *Status:* Partial

Hunter Water S170 Register

Images



Buttai No. 2 Reservoir

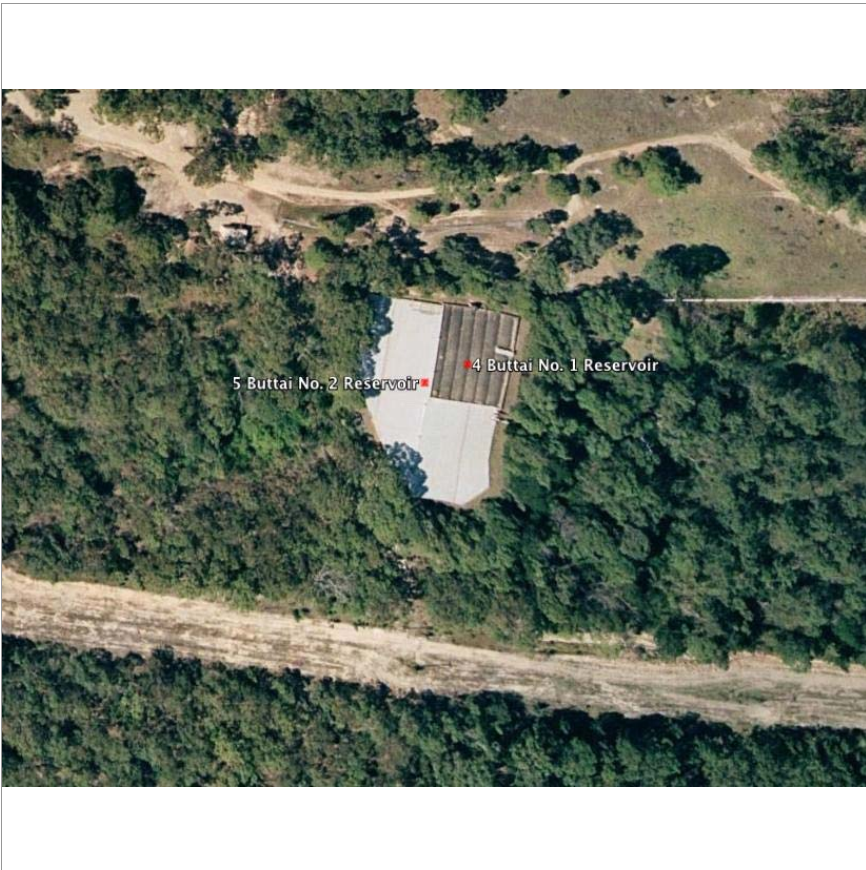
File: Buttai Reservoir 2.jpg

Copyright:

Image by: Futurepast Heritage Consulting Pty Ltd

Date: 18/05/2010

Thumbnail: t_Buttai Reservoir 2.jpg



Buttai No. 2 Reservoir Location (Courtesy of Google Earth)

File: buttai reservoir GE.jpg

Copyright:

Image by: Google Earth

Date:

Thumbnail: t_buttai reservoir GE.jpg