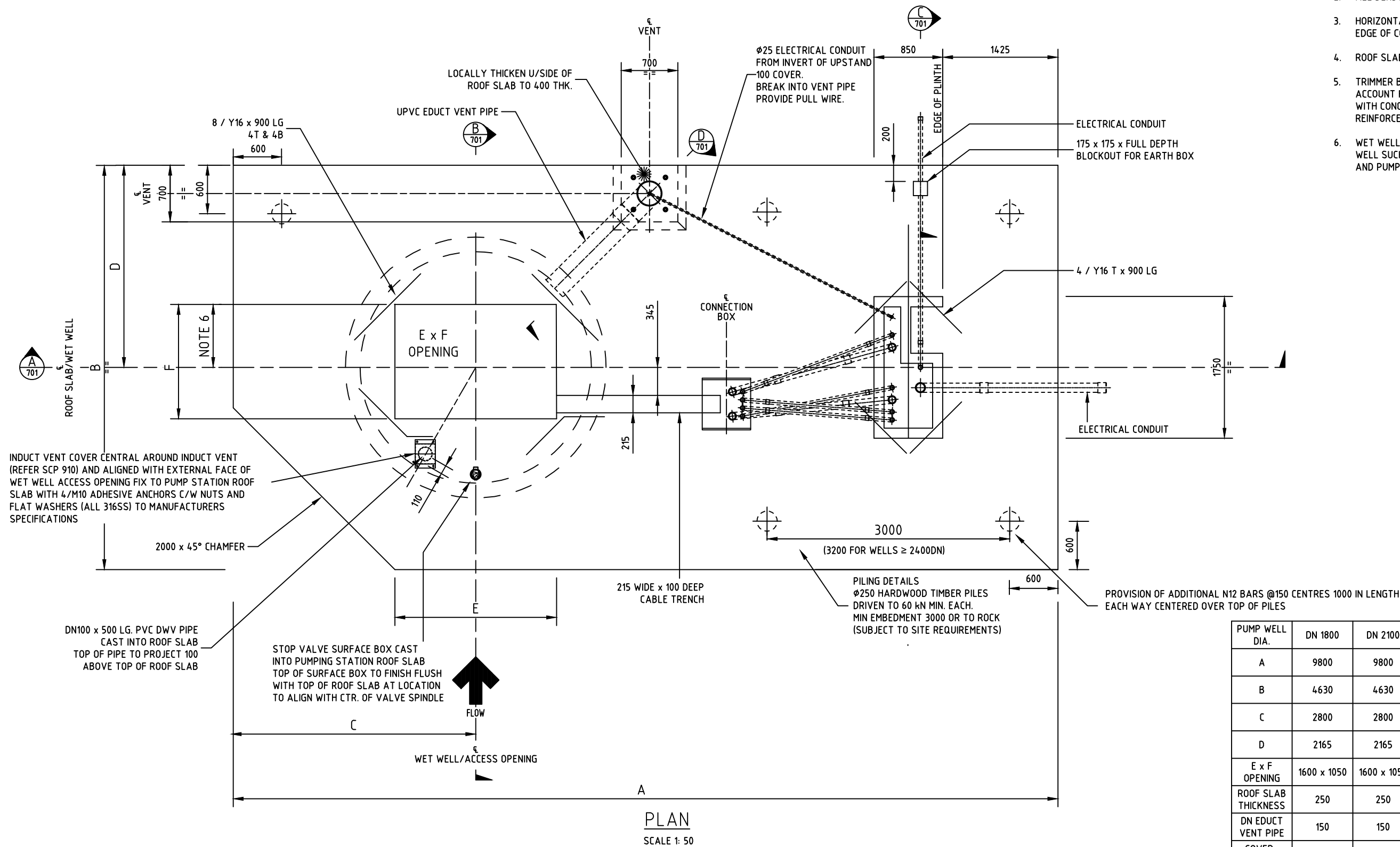


NOTES:

1. ALL ELECTRICAL CONDUITS TO BE H.D. ORANGE PVC.
2. ALL BENDS ARE TO BE LARGE 90° SWEEP BENDS.
3. HORIZONTAL CONDUITS TO EXTEND 600 MIN. PAST EDGE OF CONCRETE AND CAPPED.
4. ROOF SLAB TO BE S40 CONCRETE.
5. TRIMMER BARS AROUND WET WELL OPENINGS TO ACCOUNT FOR DISPLACED BARS IN ACCORDANCE WITH CONCRETE INSTITUTE OF AUSTRALIA REINFORCEMENT DETAILING HANDBOOK.
6. WET WELL OPENING TO BE OFFSET FROM CENTRE OF WELL SUCH THAT GUIDE RAILS, RISER PIPEWORK AND PUMPS CAN BE REMOVED.



PUMP WELL DIA.	DN 1800	DN 2100	DN 2400	DN 2700	DN 3000
A	9800	9800	10000	10200	10200
B	4630	4630	5000	5000	5000
C	2800	2800	2900	3000	3000
D	2165	2165	2500	2500	2500
E x F OPENING	1600 x 1050	1600 x 1050	1800 x 1420	2000 x 1420	2000 x 1420
ROOF SLAB THICKNESS	250	250	250	300	300
DN EDUCT VENT PIPE	150	150	225	300	300
COVER TYPE	GAS TIGHT	GAS TIGHT	SLIDING	SLIDING	SLIDING

1	ADDITION OF CONNECTION BOX. SWITCHBOARD MADE PERPENDICULAR TO SLAB. OVERALL ROOF SLAB DIMENSIONS MODIFIED. ADDED NOTE 6	S.H.	1-06-2016
REV. N°	REVISION	APPROV	DATE
	Structural Assessment Michael Flynn CPEng NPER 455945 April 2016	APPROVED	
© COPYRIGHT HUNTER WATER CORPORATION		MANAGER ASSET MANAGEMENT	



STANDARD CONSTRUCTION PRACTICE
SEWERAGE STANDARD
 SEWERAGE PUMPING STATIONS
 DN 1800 TO 3000 DUPLEX SPS
 CONCRETE ROOF SLAB - PLAN

CAD FILE NAME: SCP-700
SCP-700
 ISSUED: 2016