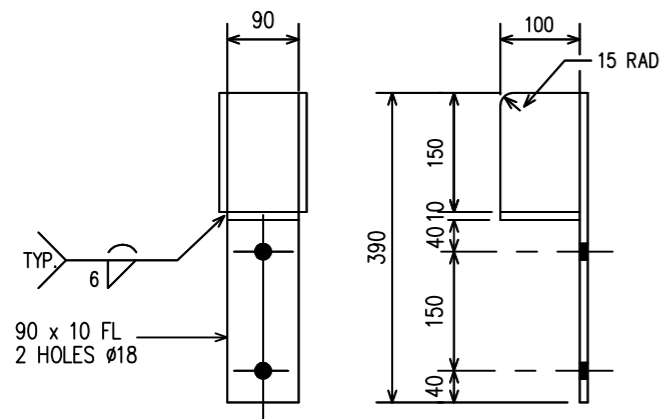
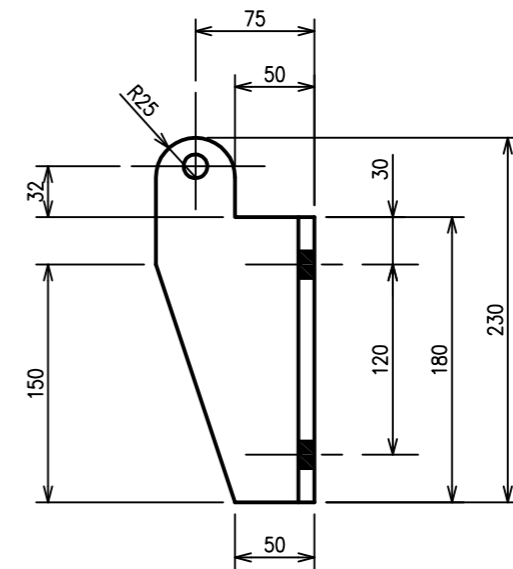
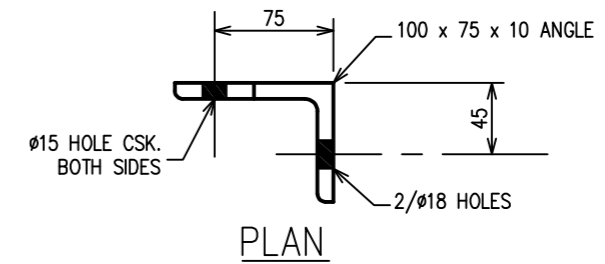


BEAM MK A-602 – AS NOTED
 BEAM MK B-602 – AS NOTED
 BEAM MK C-602 – AS NOTED
 BEAM MK D-602 – AS NOTED
 MATERIAL : STRUCTURAL STEEL GRADE 300PLUS



SUPPORT BRACKET MK E-602
 MATERIAL : STRUCTURAL STEEL GRADE 300PLUS



LOCKING BRACKET MK F-602
 MATERIAL : STRUCTURAL STEEL GRADE 300PLUS

NOTES:

1. ALL STEELWORK TO BE HOT DIPPED GALVANISED AFTER FABRICATION.

2	TITLE BLOCK AMENDED	S.H.	01-06-16
1	LOCKING BRACKET DIMENSIONS ALTERED	J.R.G.	01-07-02
REV. N°	REVISION	APPROVED	DATE
© COPYRIGHT HUNTER WATER CORPORATION		APPROVED MANAGER ASSET MANAGEMENT	



STANDARD CONSTRUCTION PRACTICE
SEWERAGE STANDARD
 SEWAGE PUMPING STATIONS
 CIRCULAR VALVE PIT COVERS
 BEAMS AND BRACKET DETAILS

CAD FILE NAME: SCP-602

HWCS
SCP-602

ISSUED: 2016