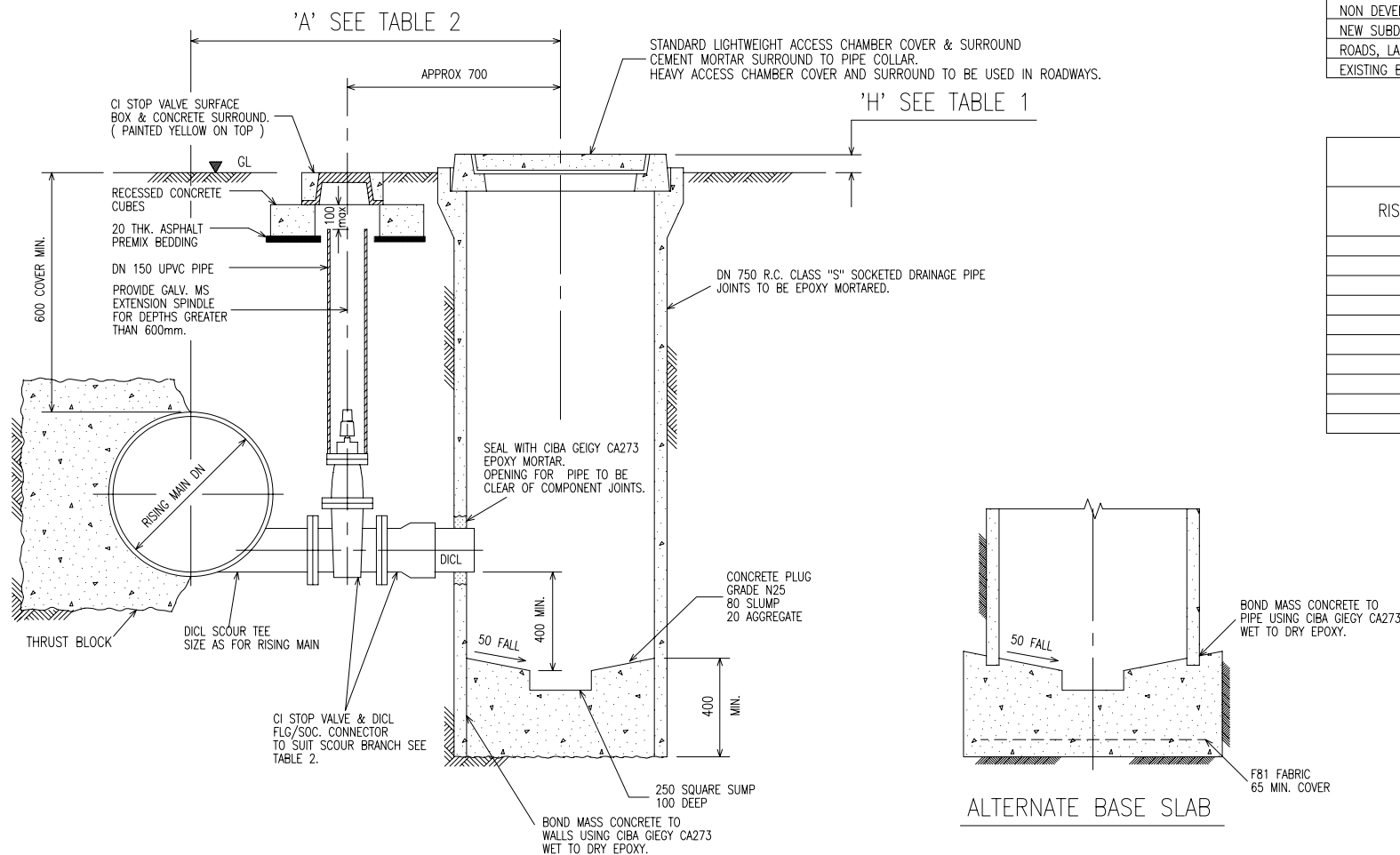


TABLE 1

FINISHED LEVELS OF SCOUR PIT COVERS	
LOCATION	'H'
NON DEVELOPED AREAS	300
NEW SUBDIVISIONS	75
ROADS, LANEWAYS, FOOTPATHS & DRIVEWAYS	FLUSH
EXISTING BUILT UP AREAS	25

TABLE 2

SCOUR SIZE AND LOCATION		
RISING MAIN	BRANCH	'A'
DN 100	DN 100	1000
DN 150	DN 80	1050
DN 200	DN 80	1050
DN 225	DN 100	1100
DN 250	DN 100	1100
DN 300	DN 100	1100
DN 375	DN 150	1200
DN 450	DN 150	1250
DN 500	DN 150	1300
DN 600	DN 150	1300



PUMP OUT SCOUR ARRANGEMENT

REV. N°	REVISION	APPROVED	DATE

HUNTER WATER CORPORATION
A.C.N. 053 102 837



STANDARD CONSTRUCTION PRACTICE
SEWERAGE STANDARD

PUMP OUT SCOUR
FOR DN 100 TO 600 SEWER RISING MAINS

CAD FILE NAME: SCP-1005

HWCS
SCP-1005

ISSUED: 1997 A3

© COPYRIGHT HUNTER WATER CORPORATION LIMITED.

APPROVED
MANAGER
CEC CONSULTING ENGINEERS

APPROVED
MANAGER
PLANNING AND DEVELOPMENT