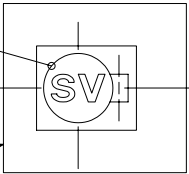


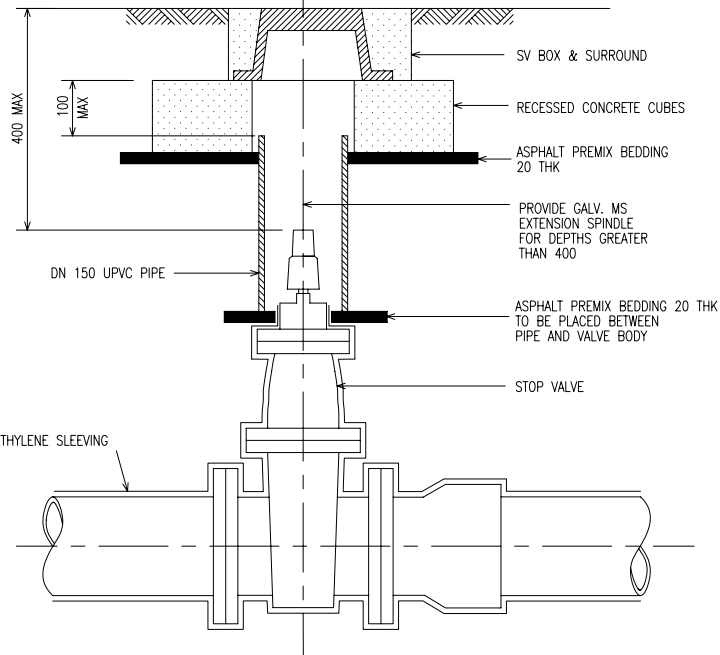
UNDERSIDE OF VALVE  
BOX LID TO BE PAINTED  
AS FOLLOWS

| STOP VALVE<br>TYPE     | COLOUR |
|------------------------|--------|
| RUBBER TONGUE<br>VALVE | BLUE   |
| ZONE VALVE             | RED    |

DIRECTION OF TRAFFIC  
WHERE APPLICABLE

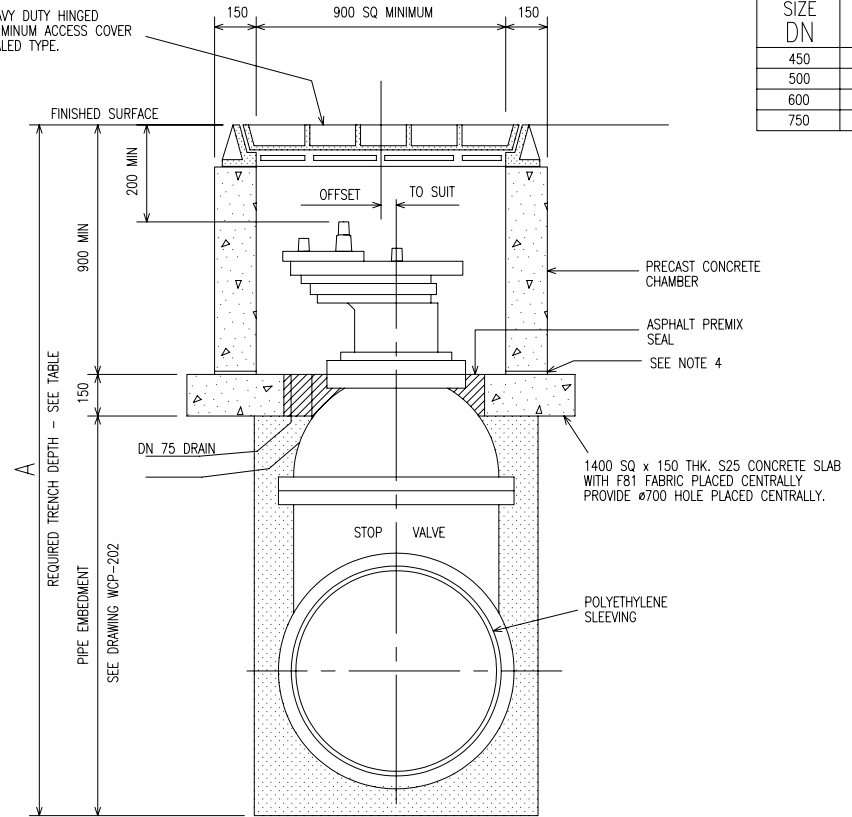


PAINT LID &  
SURROUND YELLOW



STOP VALVE  
FOR DN 100 TO 375 MAINS

HEAVY DUTY HINGED  
ALUMINUM ACCESS COVER  
SEALED TYPE.



FOOTWAY  
REDUCED SIZE VALVE CHAMBER  
FOR DN 450 TO 750 STOP VALVES

| NOMINAL<br>SIZE<br>DN | TRENCH DEPTH<br>A |
|-----------------------|-------------------|
| 450                   | 1800              |
| 500                   | 1970              |
| 600                   | 2060              |
| 750                   | 2350              |

NOTES:

- THIS DRAWING SHALL BE READ IN CONJUNCTION WITH SPECIFICATION STS-401
- AN ALTERNATIVE TO PRECAST CONCRETE CHAMBERS IN NON TRAFFICABLE LOCATIONS MAY BE THE USE OF BRICK CHAMBERS.
- CONCRETE TO BE S25 TO A.S. 3600
  - SLUMP 80mm
  - AGGREGATE SIZE 20mm (max)
- JOINTS TO BE 20 TO 50mm THK. FOR CEMENT MORTAR, ALTERNATIVELY A 6mm THK. BED OF BUTYL MASTIC MAY BE USED.
- TRENCH DEPTH "A" IS STANDARD TRENCH DEPTH INCREASED LOCALLY TO ENABLE INSTALLATION OF VALVE.
- DIRECTION AND GRADE OF DRAINAGE PIPE TO SUIT THE POSITION OF THE STORMWATER DRAIN.

| REV. N° | REVISION | APPROVED | DATE |
|---------|----------|----------|------|
|         |          |          |      |
|         |          |          |      |
|         |          |          |      |

**HUNTER WATER CORPORATION**  
A.C.N. 053 102 837



STANDARD CONSTRUCTION PRACTICE  
**WATER STANDARD**

INSTALLATION – STOP VALVE  
FOR DN 100 TO 750 MAINS

CAD FILE NAME: WCP-301

HWCS

**WCP-301**

ISSUED: 1997

A3

© COPYRIGHT HUNTER WATER CORPORATION LIMITED.

APPROVED  
MANAGER  
CEC CONSULTING ENGINEERS

APPROVED  
MANAGER  
PLANNING AND DEVELOPMENT