






Information sheet

SHOWERHEADS

A water efficient showerhead can save more than just water, it can also save you money on bills while reducing your greenhouse gas emissions.

Shower	Water consumption when showering for:			Consumption (per annum)	Typical Water Savings (per annum)
	4 min	7 min	10 min		
 Old inefficient showerhead 16 litres per minute	64L	112L	160L	58,400L	
 Bermuda 3F showerhead 9 litres per minute	36L	63L	90L	32,850L	25,550L
 Satinjet Standard showerhead 7.5 litres per minute	30L	52.5L	75L	27,375L	31,025L

Annual figures based on a household size of 2.5 people, showering for 4 minutes, once per day for 365 days of the year.

Did you know?

- By upgrading your old 16 litre per minute showerhead to a 9 litre per minute model, your household could save up to 2.2 tonnes of CO₂ every year.
- Electric hot water on average can account for up to 1/3 of your energy use.
- A 5 minute shower can use the same amount of energy as running a standard television for 20 hours.

Useful water saving hints

- ✓ Take **shorter showers**. Use a shower timer or alarm to reduce your shower time by 2 minutes. Remember that shorter showers also save on hot water costs.
- ✓ **Use a bucket** to collect water from the shower while you are waiting for it to reach the right temperature. Use this water on your garden in the morning or evening.



How to install a new showerhead

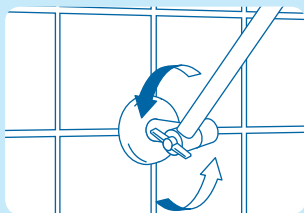
You can change over your showerhead by using the following instructions. For a video tutorial visit www.savewater.com.au

Contact a plumber if you have difficulty with any of the steps when installing a showerhead or flow controller. Don't force the fittings or overtighten the new showerhead as you may damage the wall or plumbing fittings, which can result in costly repair bills.

If you have gravity fed hot water or an older instantaneous hot water service, flow control devices (in the showerhead or the inline flow controller) may not work effectively with these systems. You may need to seek assistance from a plumber to ensure your shower quality is not diminished.

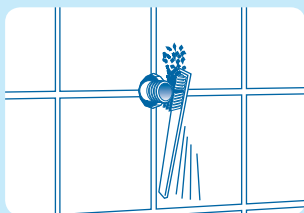
Disclaimer: While savewater!® has attempted to ensure that all the above information is accurate, it cannot accept responsibility for any loss you may suffer by relying on it.

© savewater!® Alliance, July 2011



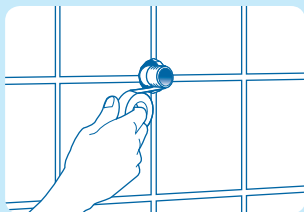
STEP 1

- Remove existing showerhead arm (turn counterclockwise), using a spanner and cloth if needed.
- Do not force it – you may damage the wall.
- Remove flange from supply outlet.



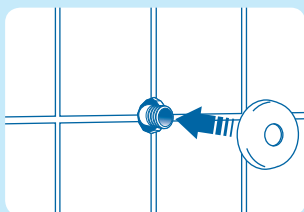
STEP 2

- Clean thread of supply outlet with steel wool or a stiff brush and dry the area thoroughly.



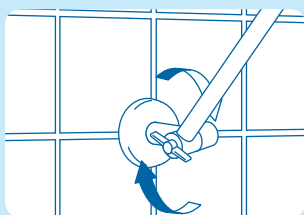
STEP 3

- Wind about 6 rotations of teflon tape around supply outlet.
- Keep the outermost thread clear of tape.



STEP 4

- Place flange over supply outlet.



STEP 5

- Screw new showerhead arm onto supply outlet, turning clockwise. Don't use shower arm to tighten, use a spanner and cloth if needed, but don't overtighten.
- Don't reverse the screwing action (it will break the teflon seal).
- Turn water on to check for any leaks around the connections.

Acknowledgement: Thank you to Interbath Australia for the showerhead installation diagrams.

Further information

For further information visit www.hunterwater.com.au or call 1300 657 657.