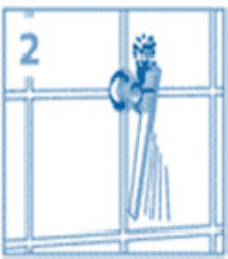


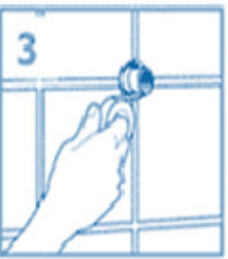
How to Change Your Showerhead



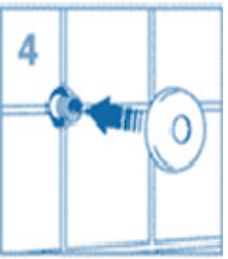
Make sure the shower taps are off! Remove existing showerhead arm (turn counter clockwise), using a spanner and cloth. Do not force it - you may damage the wall.



Clean the thread of supply outlet with steel wool or a stiff brush and dry the area thoroughly.



Wind about 6 rotations of Teflon tape around the supply outlet. Keep the outermost thread clear of tape.



Place flange over supply outlet.



Attach showerhead to the arm. Screw new showerhead arm onto supply outlet using a spanner (turn clockwise to tighten). Make sure you use a cloth to avoid scratching your new showerhead.

DO'S AND DONT'S OF CHANGING YOUR SHOWERHEAD

- Don't reverse the screwing action as it will break the Teflon seal.
- **Always use a spanner and a cloth to remove and fix the showerhead.** The cloth will help protect your new showerhead from being scratched. Don't use the actual shower arm as it may break.
- Make sure you don't over-tighten the shower arm as you may damage the wall or plumbing fittings.

If you have difficulty with any of the steps **call a plumber.**

Watch the online video

A how-to video is available at
www.savewater.com.au

You can find the video by clicking on "Home" and then "Video Tutorials".

